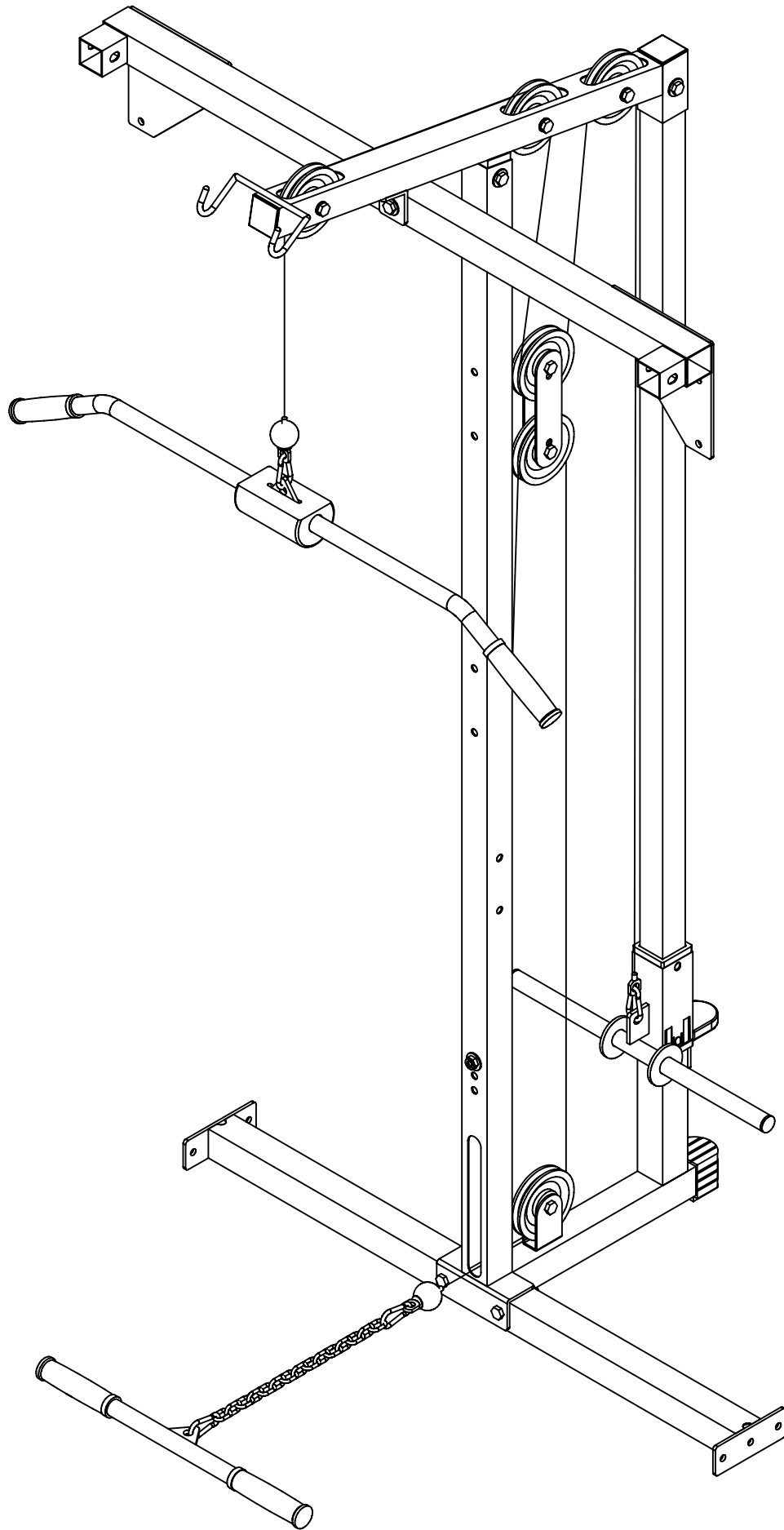


PLA-178.1

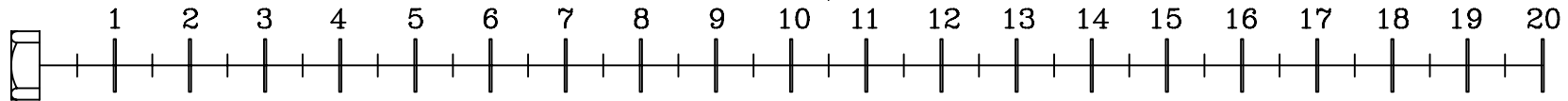
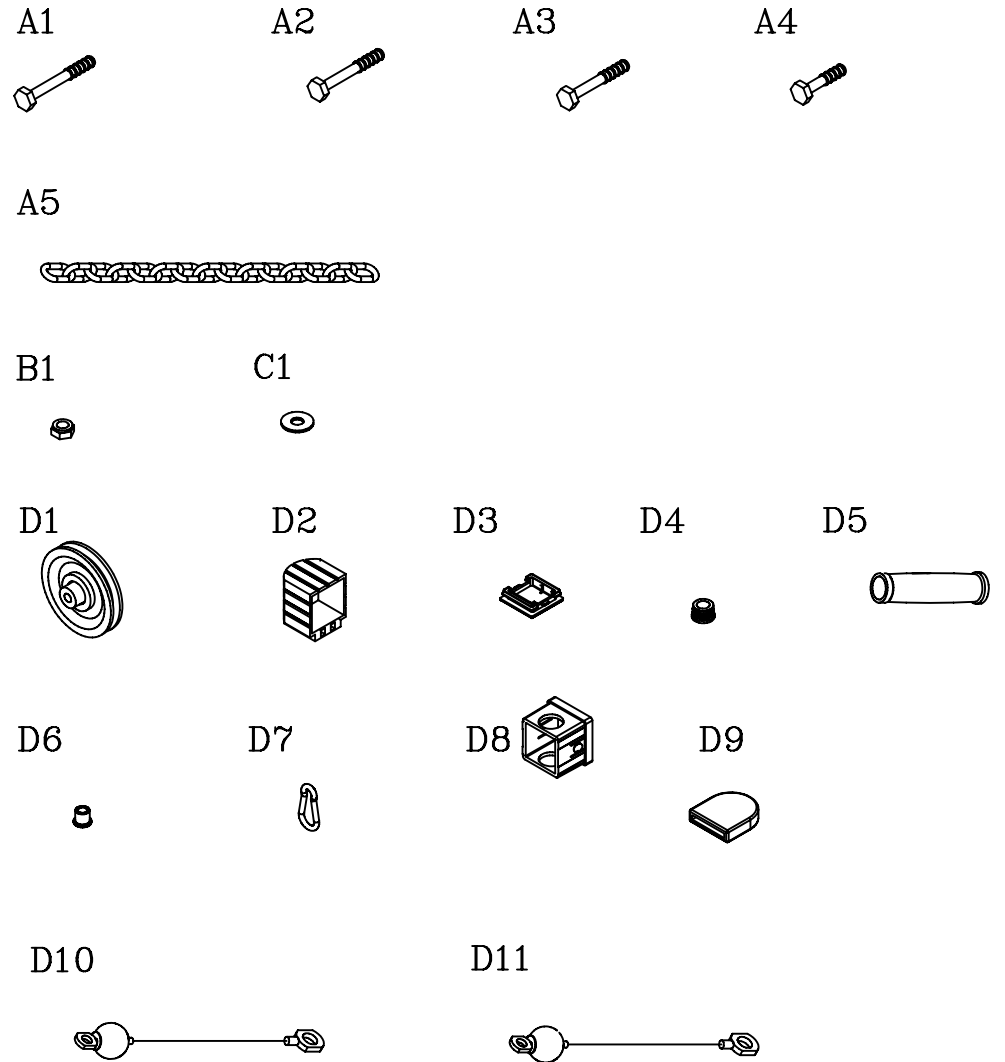


VERSION 0302

PLA-178.1

HARDWARE ILLUSTRATION SHEET

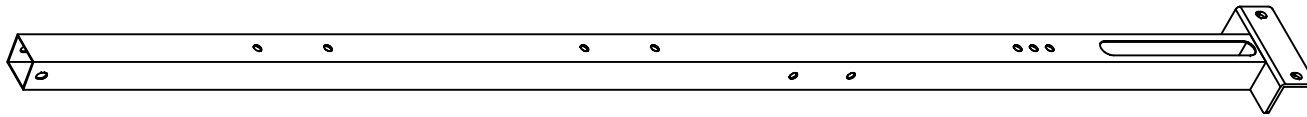
	Qty.
A1. M10X75 HEX HEAD BOLT -----	[2PCS]
A2. M10X70 HEX HEAD BOLT-----	[1PCS]
A3. M10X65 HEX HEAD BOLT -----	[6PCS]
A4. M10X40 HEX HEAD BOLT-----	[3PCS]
A5. STEEL CHAIN -----	[1PCS]
B1. M10 NYLON LOCK NUT-----	[12PCS]
C1. M10 (I.D) WASHER-----	[8PCS]
D1. ϕ 110 PULLEY (9213-001) -----	[6PCS]
D2. 50X50 FOOT CAP (9212-003)-----	[1PCS]
D3. 50X50 END CAP (9211-005)-----	[2PCS]
D4. ϕ 1" ROUND END CAP (9211-016)-----	[2PCS]
D5. ϕ 1"X135 RUBBER GRIP (9212-016)-----	[4PCS]
D6. ϕ 16 STEEL BUSHING (9211-041)-----	[6PCS]
D7. ϕ 6 SPRING SNAP LINK (8810-002)-----	[4PCS]
D8. 60X45 NYLON BUSHING (9211-032)-----	[2PCS]
D9. 50X6t RUBBER DOUNT (9310-019)-----	[1PCS]
D10. 3090mm STEEL CABLE -----	[1PCS]
D11. 2965mm STEEL CABLE -----	[1PCS]



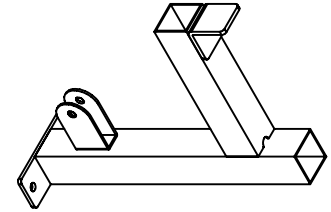
PLA-178.1

PARTS ILLUSTRATION SHEET

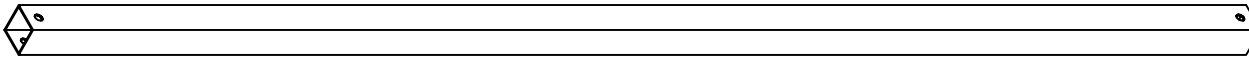
A [1PCS]



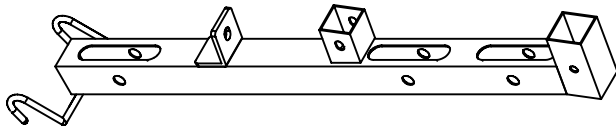
B [1PCS]



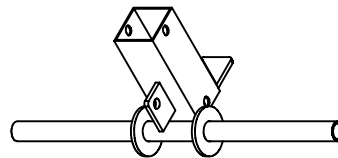
C [1PCS]



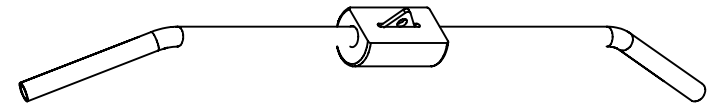
E [1PCS]



D [1PCS]



F [1PCS]



G [1PCS]



H [2PCS]



